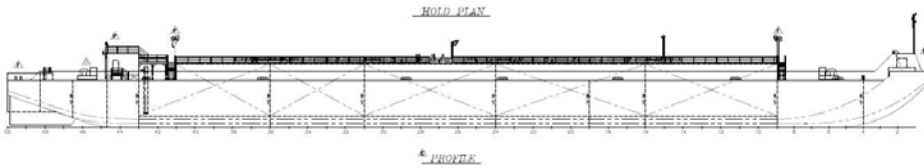


A-70

OFFICIAL #:

994740



239 Lakeside Dr.
Channelview, TX 77530

www.harleymarine.com



MAIN PARTICULARS:

| | |
|----------|--|
| Built: | 1993 |
| Builder: | Pearlington, MS - Gulf Coast Fabrication |
| Class: | ABS - Domestic Service Load Line |

DIMENSIONS:

| | |
|-----------------------|-----------|
| Gross Tonnage: | 5,825 ITC |
| Net Tonnage: | 3,761 ITC |
| Length: | 382.8 ft. |
| Length Overall (LOA): | 413 ft. |
| Beam: | 78 ft. |
| Depth: | 21 ft. |
| Loadline Draft: | 10.08 ft. |
| Air Draft: | 40 ft. |

CAPACITIES:

| | |
|-------------------|-------------|
| Cargo Type(s): | Clean |
| Total Cargo: | 67,400 bbls |
| Tons Per Inch: | N/A |
| Stripping System: | N/A |

MACHINERY:

| | |
|--------------------|-------------------------------|
| Pumps: | (1) Byron Jackson, 3 Stages |
| Pump Engines: | (1) 270 HP Cummins 6CTA8.3-DM |
| Auxillaries: | N/A |
| Connection System: | N/A |
| Inert Gas System: | N/A |
| Cargo Heater: | N/A |

PERFORMANCE:

| | |
|---------------|---|
| Pumping: | 5,000 BPH |
| Gauging: | Closed Hermetic |
| Alarms: | Visual Electronic Bergan hi. level & overflow |
| Cargo Header: | 1 Port/ 1 Stbd 8 in. |
| Vapor Header: | 1 Port 8 in. |

DECK MACHINERY:

| | |
|---------------|--|
| Deck Crane: | (2) EBI C20 Deck Crane |
| Deck Winches: | (2) Nabrico 60 Ton Manual Winch w/ LPS |
| Anchor: | N/A |

TANK ARRANGEMENT:

| | |
|------------------|---------|
| BCM: | 191 ft. |
| BVM: | N/A |
| SCM: | 191 ft. |
| Number of Tanks: | 10 |
| Segregation(s): | 0 |

CARGO TANK CONFIG. @ 94.5%

| Tank # | Port | Center | Starboard |
|--------|---------|--------|-----------|
| 1 | 7317.83 | | 7318.73 |
| 2 | 8434.19 | | 8431.05 |
| 3 | 7393.83 | | 7396.08 |
| 4 | 5256.64 | | 5251.63 |
| 5 | 6682.32 | | 6673.75 |
| 6 | | | |