

OFFICIAL # 1246997

ABS ID NA

MAIN PARTICULARS

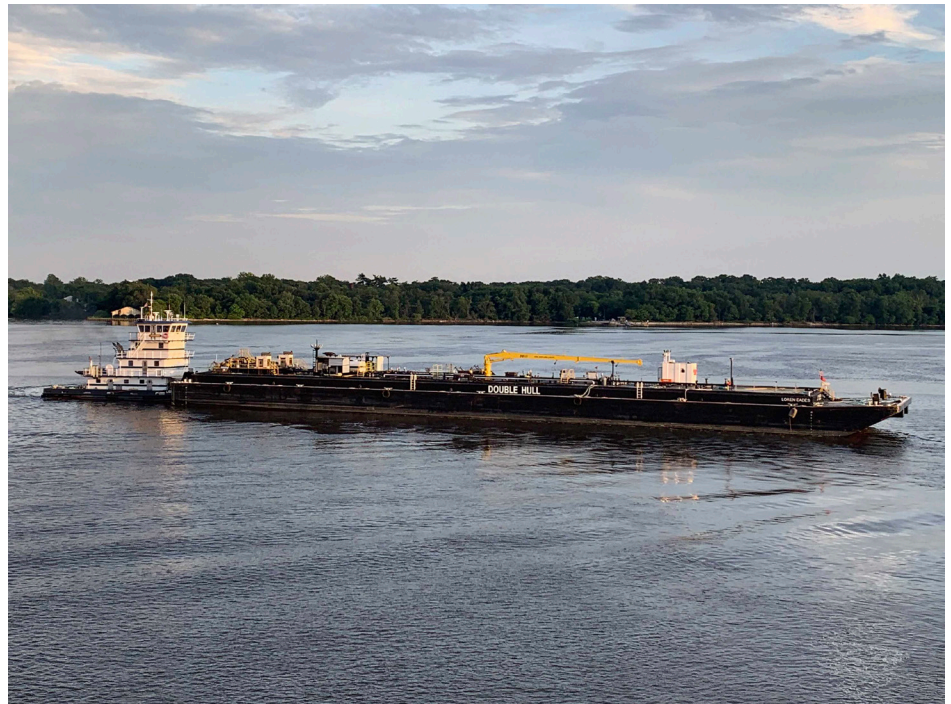
BUILT	5/24/2013
BUILDER	Raymond, Coden, AL
CLASS, ROUTES	NA, Lakes, Bays, and Sounds

DIMENSIONS

LENGTH	297 ft
LENGTH OVERALL	297.5 ft
BEAM	54 ft
DEPTH	12 ft
GROSS TONNAGE	1616 GRT
NET TONNAGE	1616 NRT
LOADLINE DRAFT	
AIR DRAFT	26 ft
DEADWEIGHT	

CARGO HANDLING

# OF ISOLATED CARGO SYSTEMS, PRODUCT GRADE	2, Grade "A" and lower
CARGO HEADER	1 Port/1 Stbd; 10in
VAPOR HEADER	(4) 3 Port/3 Stbd/4 Port/ 4 Stbd
BCM	150 ft
SCM	150 ft
PUMPING	8000 BBL/HR
GAUGING	Open or Closed Hermetic
ALARMS	Bergan Guard Level Elec. Alarms Bergan Tri-Stick


MACHINERY

PUMPS	(2) Byron Jackson LS-12, 3-Stage
PUMP ENGINE	(2) Cummins 6CTA 8.3-D
AUXILIARIES	(1) Cummins 6CTA 5.9-D
CARGO HEATER	Volcanic 3.5 MBtu
ATB CONNECTION SYSTEM	NA
INERT GAS SYSTEM	NA
STRIPPING SYSTEM	No

CARGO TANK CONFIG. @ 95%

TANK #	PORT	CENTER	STARBOARD
1	4513.45		4511.55
2		3455.36	
3	2759.75		2759.75
4	4,465.53		4,465.28
5			
6			
7			

DECK HARDWARE

HOSE HANDLING CRANE	(1) Hawboldt Industries HAW65-11F
DECK WINCHES	
MOORING WINCHES	NA
ANCHOR WINCH	NA

CAPACITIES

CARGO CAPACITY BBLs @ 95%	26930.67
UNREFINED CAPACITY BBLs @ 95%	17,766.80 @ 94%
REFINED CAPACITY BBLs @ 95%	8,880.39 @ 94%
AUX DIESEL TANK	4,000 gallons

ABOUT

REVISION: 05/28/2020

CENTERLINELOGISTICS.COM
