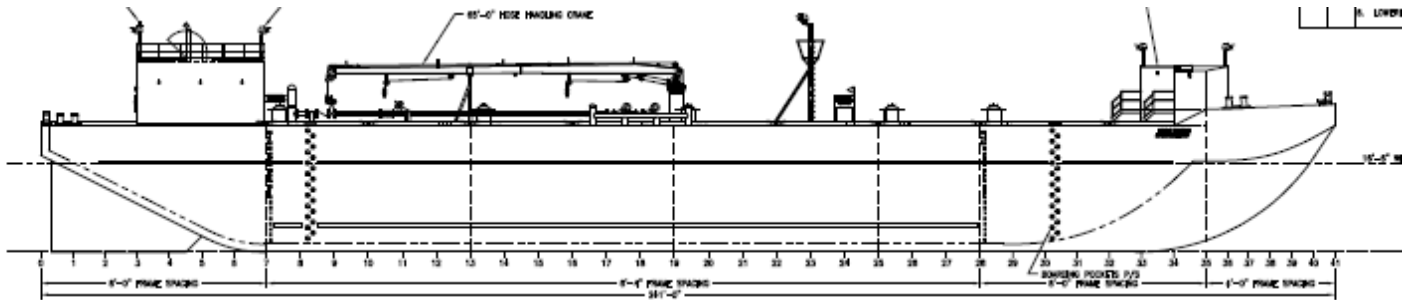


NATHAN SCHMIDT

Official # 1219418



Main Particulars:

Length: 241 ft.
 Beam: 64.5 ft.
 Depth: 23.5 ft.
 BCM: 126 ft.

Capacities:

31,500 barrels @ 95%

Products:

Grade "A" and all lower

Regulatory:

Built: 2009, Portland, OR
 Gross Tonnage: 2,724 GRT
 Net Tonnage: 1,403 NRT
 USCG Certified Grade "A"
 ABS ✕ A1 Oil Tank Barge
 Double Hull

Arrangement:

Cargo Tanks: 9
 Tank Capacities @ 95%:
 1-P 3500 1-S 3500
 2-C 3500
 3-P 3500 3-S 3500
 4-P 3500 4-S 3500
 5-P 3500 5-S 3500

Machinery:

Pumps: (2) Byron Jackson Model 11LS
 Prime Movers: (2) DET 60, Tier III
 Auxiliaries: (1) Northern Lights, 30kw, Tier III
 Cargo Heater: None

Performance:

Pumping: IFO – 7,000 BPH
 Gauging: Hermetic Closed
 Alarms: EMS High level/overflow
 Cargo headers: 2 port & 2 stbd

Deck Machinery:

Hose Handling Crane: Hydro Pro Mod #65-11
 Facing Wire Winches: (2) 40 ton Beebe's

Ballast Tank:

None

Lube Oil Tanks:

None

